

The logo for DNK, consisting of the letters 'DNK' in a bold, red, sans-serif font. The background of the entire page features a large, abstract graphic with a red-to-yellow gradient and a diagonal yellow stripe.

SHENZHEN **DB POWER** TECHNOLOGY CO., LTD

Lithium BATTERY

LiFePO₄ BATTERY

Li-Polymer BATTERY

Add: 11th Floor, Block A, Huihai Plaza, No.19 Sanlian Chuangye Road, Sanlian Community,
Longhua Street, Longhua District, Shenzhen City, GuangDong Province, China

Tel: + 86 755 36827358 Fax: +86 755 61605250 Email: sales@dnkpower.com

<https://www.dnkpower.com>



WHO ARE WE?

DNK POWER was founded in 2007, an one-stop green and safe power solution company, is also a leading high-tech manufacturer which covering research, development, production, sales and service of new energy products. Our main products including lithium ion polymer battery(lipo) and lithium ion Battery (Li-ion), 18650 battery and new LiFePO4 battery all the time, DNK POWER has TWO wholly -owned subsidiaries in Dongguan City and Shenzhen City, we are engaged in the production of lithium ion Related battery manufacturing and design business.



Based on quality, excellence, and casting quality model, DNK POWER will use innovation to bring together innovation, based on market development, and use the "core" to light up the world, The company is willing to persist in providing high-reliability and new energy products to the society, and strive to promote the sustainable development of human green energy.



DNK POWER, ever from its establishment, is committed to provide Safe and Green power solutions for All our partners from home and abroad! Our lithium batteries are used in all kinds of electronic Devices, such as digital products, telecommunications product, medical devices, power tool, wireless devices, LED lamp, notebook, GPS product, CCTV Security, UPS power, solar power system, Industry devices, E-bike and scooters .

WHY CHOOSE US?

1. Focus on Safe lithium battery technology
2. strong relationship with Sanyo and Samsung SDI
3. No Explosion reported ever since 2007
4. IEC62133, UN38.3 AND MSDS Reports from TUV Labs
5. Fast lithium battery Data sheet within 2 days
6. Free battery design consult
7. Wide range of voltages from 3.0V to 360V.
8. Optional Communication protocol like SMbus, UART, CAN bus, RS485, RS232, and so on

Qualification certification



CB



BIS



CE



KC



MSDS



REACH



Transportation Certificate



UN38.3



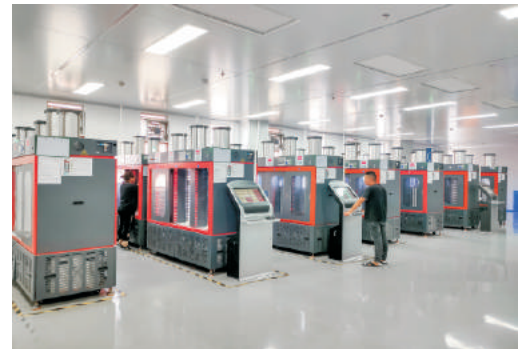
UL Certificate SGS



IEC 62133-2017

*There are many certificates that are not shown, please contact for more info
We can help to get certifications for any of your custom project*

Battery production line



We own 10 cells production lines and we have rich channels for Panasonic, Samsung, Sanyo Cell, from 18650 battery, li-ion battery, li-po battery, and lifepo4 battery. We'll solve your questions in a professional way, so your device can work in great condition with affordable prices.



Part Number	DNK-LTB3726	DNK-LTB3735	DNK-LTB3750
Specification	3.7V 2.6Ah	3.7V 3.5Ah	3.7V 5Ah
Energy	9.62Wh	12.95Wh	18.5Wh
Cell Brand	LS/LG/Chinese/Sanyo	DNK/Chinese	Samsung
Cell Connection	1S1P	1S1P	1S1P
Input	4.2V-1.3A	4.2V-1.75A	4.2V-2.5A
Output	3.7V-1.3A	3.7V-1.75A	3.7V-2.5A
Max. Charge Current	1.3A	1.75A	2.5A
Dimensions (mm)	D20*H68	D20*H68	D28*H68
Weight (appr.)	50g	55g	90g
Cycle Life	500(25°C, 80%SOC)		
Terminal	JST/XT60/M8/M6/DC5521/...		
Optional	I2C		



Part Number	DNK-LTB37104	DNK-LTB37140	DNK-LTB37200
Specification	3.7V 10.4Ah	3.7V 14Ah	3.7V 20Ah
Energy	38.48Wh	51.8Wh	74Wh
Cell Brand	DNK/Chinese	LS/LG/Chinese/Sanyo	Panasonic
Cell Connection	1S4P	1S4P	1S4P
Input	4.2V-5.2A	4.2V-7A	4.2V-10A
Output	3.7V-5.2A	3.7V-7A	3.7V-10A
Max. Charge Current	5.2A	7A	10A
Dimensions (mm)	20*80*75	20*80*75	28*110*75
Weight (appr.)	200g	220g	360g
Cycle Life	500(25°C, 80%SOC)		
Terminal	JST/XT60/M8/M6/DC5521/...		
Optional	I2C		



Part Number	DNK-LTB37208	DNK-LTB37280	DNK-LTB37400
Specification	3.7V 20.8Ah	3.7V 28Ah	3.7V 40Ah
Energy	76.96Wh	103.6Wh	148Wh
Cell Brand	Panasonic	DNK/LS/LG	LG/Chinese/Sanyo
Cell Connection	1S8P	1S8P	1S8P
Input	4.2V-10.4A	4.2V-14A	4.2V-20A
Output	3.7V-10A	3.7V-10A	3.7V-10A
Max. Charge Current	10.4A	14A	20A
Dimensions (mm)	45*175*85	45*85*175	45*235*85
Weight (appr.)	400g	440g	720g
Cycle Life	500(25°C, 80%SOC)		
Terminal	JST/XT60/M8/M6/DC5521/...		
Optional	I2C		

* Note: Data is for reference only, all products can be customized according to actual needs

Part Number	DNK-LTB7426	DNK-LTB7435	DNK-LTB7450
Specification	7.4V 2.6Ah	7.4V 3.5Ah	7.4V 5Ah
Energy	19.24Wh	25.9Wh	37Wh
Cell Brand	DNK/LG/LS	LS/LG/Chinese/Sanyo	Chinese/Samsung
Cell Connection	2S1P	2S1P	2S1P
Input	8.4V-1.3A	8.4V-1.75A	8.4V-2.5A
Output	7.4V-1.3A	7.4V-1.75A	7.4V-2.5A
Max. Charge Current	1.3A	1.75A	2.5A
Dimensions (mm)	20*39*75	20*39*75	20*55*75
Weight (appr.)	100g	110g	180g
Cycle Life	500(25°C, 80%SOC)		
Terminal	JST/XT60/M8/M6/DC5521/...		
Optional	I2C		



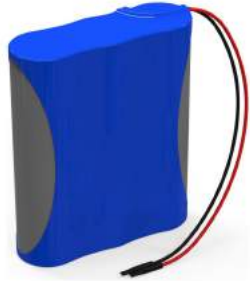
Part Number	DNK-LTB74104	DNK-LTB74140	DNK-LTB74200
Specification	7.4V 10.4Ah	7.4V 14Ah	7.4V 20Ah
Energy	76.96Wh	103.6Wh	148Wh
Cell Brand	Panasonic/LG	Chinese/Sanyo	LS/LG/Chinese
Cell Connection	2S4P	2S4P	2S4P
Input	8.4V-5.2A	8.4V-7A	8.4V-10A
Output	7.4V-10.4A	7.4V-14A	7.4V-20A
Max. Charge Current	5.2A	7A	10A
Dimensions (mm)	80*68*39	80*68*39	110*67*56
Weight (appr.)	400g	440g	720g
Cycle Life	500(25°C, 80%SOC)		
Terminal	JST/XT60/M8/M6/DC5521/...		
Optional	I2C		



Part Number	DNK-LTB74208	DNK-LTB74280	DNK-LTB74400
Specification	7.4V 20.8Ah	7.4V 28Ah	7.4V 40Ah
Energy	153.92Wh	207.2Wh	296Wh
Cell Brand	LS/LG/Chinese/Sanyo	DNK/LS/LG	LS/Samsung
Cell Connection	2S8P	2S8P	2S8P
Input	8.4V-10.4A	8.4V-14A	8.4V-20A
Output	7.4V-10.4A	7.4V-14A	7.4V-20A
Max. Charge Current	10.4A	14A	20A
Dimensions (mm)	55*185*85	55*185*85	75*245*85
Weight (appr.)	1kg	1kg	1.55kg
Cycle Life	500(25°C, 80%SOC)		
Terminal	JST/XT60/M8/M6/DC5521/...		
Optional	I2C		



* Note: Data is for reference only, all products can be customized according to actual needs



Part Number	DNK-LTB11126	DNK-LTB11135	DNK-LTB11150
Specification	11.1V 2.6Ah	11.1V 3.5Ah	11.1V 5Ah
Energy	28.86Wh	38.85Wh	55.5Wh
Cell Brand	DNK/LG/LS	Samsung/LG/Chinese	LS/LG/Sanyo
Cell Connection	3S1P	3S1P	3S1P
Input	12.6V-1.3A	12.6V-1.75A	12.6V-2.5A
Output	11.1V-1.3A	11.1V-1.75A	11.1V-2.5A
Max. Charge Current	1.3A	1.75A	2.5A
Dimensions (mm)	20*60*75	20*60*75	28*68*90
Weight (appr.)	150g	165g	270g
Cycle Life	500(25°C, 80%SOC)		
Terminal	JST/XT60/M8/M6/DC5521/...		
Optional	I2C		



Part Number	DNK-LTB111104	DNK-LTB111140	DNK-LTB111200
Specification	11.1V 10.4Ah	11.1V 14Ah	11.1V 20Ah
Energy	115.44Wh	155.4Wh	222Wh
Cell Brand	LS/LG	DNK/Panasonic/LG	LS/Chinese/Sanyo
Cell Connection	3S4P	3S4P	3S4P
Input	12.6V-5.2A	12.6V-7A	12.6V-10A
Output	11.1V-5.2A	11.1V-7A	11.1V-10A
Max. Charge Current	5.2A	7A	10A
Dimensions (mm)	60*80*75	60*80*75	68*85*118
Weight (appr.)	600g	660g	1.08kg
Cycle Life	500(25°C, 80%SOC)		
Terminal	JST/XT60/M8/M6/DC5521/...		
Optional	I2C		



Part Number	DNK-LTB111312	DNK-LTB111420	DNK-LTB111600
Specification	11.1V 31.2Ah	11.1V 42Ah	11.1V 60Ah
Energy	346.32Wh	466.2Wh	666Wh
Cell Brand	DNK/LG/LS	LS/LG/Sanyo	LG/Sanyo
Cell Connection	3S12P	3S12P	3S12P
Input	12.6V-15.6A	12.6V-21A	12.6V-30A
Output	11.1V-10Ah	11.1V-10Ah	11.1V-10Ah
Max. Charge Current	15.6A	21A	30A
Dimensions (mm)	85*145*135	85*145*135	85*183*200
Weight (appr.)	2kg	2kg	3.5kg
Cycle Life	500(25°C, 80%SOC)		
Terminal	JST/XT60/M8/M6/DC5521/...		
Optional	I2C		

*Note: Data is for reference only, all products can be customized according to actual needs

Part Number	DNK-LTB14826	DNK-LTB14835	DNK-LTB14850
Specification	14.8V 2.6Ah	14.8V 3.5Ah	14.8V 5Ah
Energy	38.48Wh	51.8Wh	74Wh
Cell Brand	DNK/LG/LS	Panasonic/LG/Sanyo	Samsung/LG/LS
Cell Connection	4S1P	4S1P	4S1P
Input	16.8V-1.3A	16.8V-1.75A	16.8V-2.5A
Output	14.8V-1.3A	14.8V-1.75A	14.8V-2.5A
Max. Charge Current	1.3A	1.75A	2.5A
Dimensions (mm)	40*135*20	40*135*20	55*132*28
Weight (appr.)	200g	220g	360g
Cycle Life	500(25°C, 80%SOC)		
Terminal	JST/XT60/M8/M6/DC5521/...		
Optional	I2C		



Part Number	DNK-LTB148112	DNK-LTB148128	DNK-LTB148180
Specification	14.8V 11.2Ah	14.8V 12.8Ah	14.8V 18Ah
Energy	165.76Wh	189.44Wh	266.4Wh
Cell Brand	Chinese/LG/Sanyo	DNK/Panasonic/LG	LS/LG/Chinese
Cell Connection	4S4P	4S4P	4S4P
Input	16.8V-5.6A	16.8V-6.4A	16.8V-9A
Output	14.8V-11.2A	14.8V-12.8A	14.8V-9A
Max. Charge Current	5.6A	6.4A	18A
Dimensions (mm)	40*135*40	40*135*40	55*132*56
Weight (appr.)	800g	880g	1.44kg
Cycle Life	500(25°C, 80%SOC)		
Terminal	JST/XT60/M8/M6/DC5521/...		
Optional	I2C		



Part Number	DNK-LTB148336	DNK-LTB148384	DNK-LTB148540
Specification	14.8V 33.6Ah	14.8V 38.4Ah	14.8V 54Ah
Energy	497.28Wh	568.32Wh	799.2Wh
Cell Brand	DNK/LG/Sanyo	Panasonic/LG	LS/LG/Chinese
Cell Connection	4S12P	4S12P	4S12P
Input	16.8V-16.8A	16.8V-19.2A	16.8V-27A
Output	14.8V-15A	14.8V-15A	14.8V-20A
Max. Charge Current	16.8A	19.2A	54A
Dimensions (mm)	165*125*H175	165*125*H175	165*125*H175
Weight (appr.)	3.5kg	3.7kg	4.5kg
Cycle Life	500(25°C, 80%SOC)		
Terminal	JST/XT60/M8/M6/DC5521/...		
Optional	I2C		



* Note: Data is for reference only, all products can be customized according to actual needs



Part Number	DNK-LTB22226	DNK-LTB22235	DNK-LTB22250
Specification	22.2V 2.6Ah	22.2V 3.5Ah	22.2V 5Ah
Energy	57.72Wh	77.7Wh	111Wh
Cell Brand	LS/Chinese/Sanyo	DNK/Chinese	Panasonic
Cell Connection	6S1P	6S1P	6S1P
Input	25.2V-1.3A	25.2V-1.75A	25.2V-2.5A
Output	22.2V-1.3A	22.2V-1.75A	22.2V-2.5A
Max. Charge Current	1.3A	1.75A	2.5A
Dimensions (mm)	55*85*90	55*85*90	60*90*90
Weight (appr.)	500g	550g	700g
Cycle Life	500(25°C, 80%SOC)		
Terminal	JST/XT60/M8/M6/DC5521/...		
Optional	I2C/SM Bus/ CAN Bus/ UART/ RS 485/Bluetooth/customized		



Part Number	DNK-LTB222112	DNK-LTB222128	DNK-LTB222180
Specification	22.2V 11.2Ah	22.2V 12.8Ah	22.2V 18Ah
Energy	248.64Wh	284.16Wh	399.6Wh
Cell Brand	DNK/Chinese	DNK/Panasonic/LG	LS/Chinese/Sanyo
Cell Connection	6S4P	6S4P	6S4P
Input	25.2V-5.6A	25.2V-6.4A	25.2V-9A
Output	22.2V-11.2A	22.2V-12.8A	22.2V-9A
Max. Charge Current	5.6A	6.4A	18A
Dimensions (mm)	120*80*68	120*80*68	168*112*68
Weight (appr.)	1.2kg	1.32kg	2.16kg
Cycle Life	500(25°C, 80%SOC)		
Terminal	JST/XT60/M8/M6/DC5521/...		
Optional	I2C/SM Bus/ CAN Bus/ UART/ RS 485/Bluetooth/customized		



Part Number	DNK-LTB222336	DNK-LTB222384	DNK-LTB222540
Specification	22.2V 33.6Ah	22.2V 38.4Ah	22.2V 54Ah
Energy	745.92Wh	852.48Wh	1198.8Wh
Cell Brand	Chinese/Sanyo	Samsung/LG/Chinese	DNK/Panasonic
Cell Connection	6S12P	6S12P	6S12P
Input	25.2V-16.8A	25.2V-19.2A	25.2V-27A
Output	22.2V-33.6A	22.2V-38.4A	22.2V-27A
Max. Charge Current	16.8A	19.2A	54A
Dimensions (mm)	229*138*H208	229*138*H208	240*145*H218
Weight (appr.)	4.5kg	4.5kg	7kg
Cycle Life	500(25°C, 80%SOC)		
Terminal	JST/XT60/M8/M6/DC5521/...		
Optional	I2C/SM Bus/ CAN Bus/ UART/ RS 485/Bluetooth/customized		

* Note: Data is for reference only, all products can be customized according to actual needs

Part Number	DNK-LTB481130	DNK-LTB481175	DNK-LTB481250
Specification	48.1V 13Ah	48.1V 17.5Ah	48.1V 25Ah
Energy	625.3Wh	841.75Wh	1202.5Wh
Cell Brand	DNK/LG/LS	Chinese/Sanyo	Chinese/LG/Samsung
Cell Connection	13S5P	13S5P	13S5P
Input	54.6V-6.5A	54.6V-8.75A	54.6V-12.5A
Output	48.1V-6.5A	48.1V-8.75A	48.1V-12.5A
Max. Charge Current	6.5A	8.75A	12.5A
Dimensions (mm)	260*168*212	260*168*212	260*168*212
Weight (appr.)	3.8kg	4kg	6.2kg
Cycle Life	500(25°C, 80%SOC)		
Terminal	JST/XT60/M8/M6/DC5521/...		
Optional	I2C/SM Bus/ CAN Bus/ UART/ RS 485/Bluetooth/customized		



Part Number	DNK-LTB481208	DNK-LTB481280	DNK-LTB481400
Specification	48.1V 20.8Ah	48.1V 28Ah	48.1V 40Ah
Energy	1000.48Wh	1346.8Wh	1924Wh
Cell Brand	DNK/LG/LS	DNK/Chinese	LS/Chinese/Samsung
Cell Connection	13S8P	13S8P	13S8P
Input	54.6V-10.4A	54.6V-14A	54.6V-20A
Output	48.1V-10.4A	48.1V-14A	48.1V-20A
Max. Charge Current	10.4A	14A	20A
Dimensions (mm)	75*160*260	75*160*260	75*225*365
Weight (appr.)	5.5kg	5.8kg	9.61kg
Cycle Life	500(25°C, 80%SOC)		
Terminal	JST/XT60/M8/M6/DC5521/...		
Optional	I2C/SM Bus/ CAN Bus/ UART/ RS 485/Bluetooth/customized		



Part Number	DNK-LTB481416	DNK-LTB481560	DNK-LTB481800
Specification	48.1V 41.6Ah	48.1V 56Ah	48.1V 80Ah
Energy	2000.96Wh	2693.6Wh	3848Wh
Cell Brand	Samsung/LG/Chinese	DNK/LS/LG	Panasonic
Cell Connection	13S16P	13S16P	13S16P
Input	54.6V-20.8A	54.6V-28A	54.6V-40A
Output	48.1V-20.8A	48.1V-28A	48.1V-40A
Max. Charge Current	20.8A	28A	40A
Dimensions (mm)	300*235*145	300*235*145	80*475*380
Weight (appr.)	11kg	12.5kg	19.5kg
Cycle Life	500(25°C, 80%SOC)		
Terminal	JST/XT60/M8/M6/DC5521/...		
Optional	I2C/SM Bus/ CAN Bus/ UART/ RS 485/Bluetooth/customized		



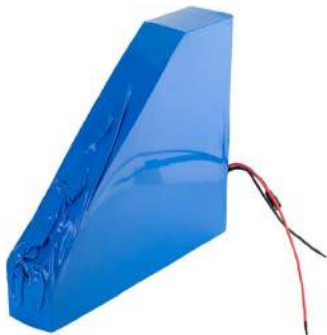
Note: Data is for reference only, all products can be customized according to actual needs



Part Number	DNK-LTB740104	DNK-LTB740140	DNK-LTB740200
Specification	72V 10.4Ah	72V 14Ah	72V 20Ah
Energy	748.8Wh	1008Wh	1440Wh
Cell Brand	DNK/LG/Sanyo	Samsung/LS/Sanyo	LS/Chinese/Samsung
Cell Connection	20S4P	20S4P	20S4P
Input	84V-5.2A	84V-7A	84V-10A
Output	74V-5.2A	74V-7A	74V-10A
Max. Charge Current	5.2A	7A	10A
Dimensions (mm)	190*145*310	190*140*310	190*140*310
Weight (appr.)	5kg	5.5kg	8kg
Cycle Life	500(25°C, 80%SOC)		
Terminal	JST/XT60/M8/M6/DC5521/...		
Optional	I2C/SM Bus/ CAN Bus/ UART/ RS 485/Bluetooth/customized		



Part Number	DNK-LTB740208	DNK-LTB740280	DNK-LTB740400
Specification	72V 20.8Ah	72V 28Ah	72V 40Ah
Energy	1497.6Wh	2016Wh	2880Wh
Cell Brand	LS/Chinese/Sanyo	DNK/Chinese/Sanyo	LG/Sanyo
Cell Connection	20S8P	20S8P	20S8P
Input	84V-10.4A	84V-14A	84V-20A
Output	74V-10.4A	74V-14A	74V-20A
Max. Charge Current	10.4A	14A	20A
Dimensions (mm)	175*425*90	175*425*90	235*575*90
Weight (appr.)	8kg	8.8kg	14.4kg
Cycle Life	500(25°C, 80%SOC)		
Terminal	JST/XT60/M8/M6/DC5521/...		
Optional	I2C/SM Bus/ CAN Bus/ UART/ RS 485/Bluetooth/customized		



Part Number	DNK-LTB740260	DNK-LTB740350	DNK-LTB740500
Specification	72V 26Ah	72V 35Ah	72V 50Ah
Energy	1872Wh	2520Wh	3600Wh
Cell Brand	Samsung/LG/Chinese	DNK/LS/LG	Samsung/LG/Sanyo
Cell Connection	20S10P	20S10P	20S10P
Input	84V-13A	84V-17.5A	84V-25A
Output	74V-13A	74V-17.5A	74V-25A
Max. Charge Current	13A	17.5A	25A
Dimensions (mm)	70*60*100*290*340*340		68*440*440*140
Weight (appr.)	10kg	11kg	18kg
Cycle Life	500(25°C, 80%SOC)		
Terminal	JST/XT60/M8/M6/DC5521/...		
Optional	I2C/SM Bus/ CAN Bus/ UART/ RS 485/Bluetooth/customized		

* Note: Data is for reference only, all products can be customized according to actual needs

Part Number	DNK-LFP3245	DNK-LFP3260	DNK-LFP3250
Specification	3.2V 4.5Ah	3.2V 6Ah	3.2V 5Ah
Energy	14.4Wh	19.2Wh	16Wh
Cell Brand	Chinese/DNK	Chinese/DNK	Chinese/DNK
Cell Connection	1S1P	1S1P	1S1P
Input	3.65V-2.25A	3.65V-3A	3.65V-2.5A
Output	3.2V-2.25A	3.2V-3A	3.2V-2.5A
Max. Charge Current	2.25A	3A	2.5A
Dimensions (mm)	D22*H75	D34*75	D28*H75
Weight (appr.)	72g	140g	270g
Cycle Life	2000(25°C, 80%SOC)		
Terminal	JST/XT60/M8/M6/DC5521/...		
Optional	I2C		



Part Number	DNK-LFP32135	DNK-LFP32180	DNK-LFP32450
Specification	3.2V 13.5Ah	3.2V 18Ah	3.2V 45Ah
Energy	43.2Wh	57.6Wh	144Wh
Cell Brand	Chinese/DNK	Chinese/DNK	Chinese/DNK
Cell Connection	1S3P	1S3P	1S3P
Input	3.65V-6.75A	3.65V-9A	3.65V-22.5A
Output	3.2V-6.75A	3.2V-9A	3.2V-10A
Max. Charge Current	6.75A	9A	22.5A
Dimensions (mm)	22*71*65	34*71*70	/
Weight (appr.)	216g	420g	810g
Cycle Life	2000(25°C, 80%SOC)		
Terminal	JST/XT60/M8/M6/DC5521/...		
Optional	I2C		



Part Number	DNK-LFP32225	DNK-LFP32250	DNK-LFP32300
Specification	3.2V 22.5Ah	3.2V 25Ah	3.2V 30Ah
Energy	72Wh	80Wh	96Wh
Cell Brand	Chinese/DNK	Chinese/DNK	Chinese/DNK
Cell Connection	1S5P	1S5P	1S5P
Input	3.65V-11.25A	3.65V-12.5A	3.65V-15A
Output	3.2V-10A	3.2V-10A	3.2V-10A
Max. Charge Current	11.25A	12.5A	15A
Dimensions (mm)	22*71*110	34*71*160	/
Weight (appr.)	360g	375g	700g
Cycle Life	2000(25°C, 80%SOC)		
Terminal	JST/XT60/M8/M6/DC5521/...		
Optional	I2C		



* Note: Data is for reference only, all products can be customized according to actual needs



Part Number	DNK-LFP6445	DNK-LFP6460	DNK-LFP64150
Specification	6.4V 4.5Ah	6.4V 6Ah	6.4V 15Ah
Energy	28.8Wh	38.4Wh	96Wh
Cell Brand	Chinese/DNK	Chinese/DNK	Chinese/DNK
Cell Connection	2S1P	2S1P	2S1P
Input	7.3V-2.25A	7.3V-3A	7.3V-7.5A
Output	6.4V-2.25A	6.4V-3A	6.4V-7.5A
Max. Charge Current	2.25A	3A	7.5A
Dimensions (mm)	22*72*44	65*71*33	/
Weight (appr.)	144g	280g	540g
Cycle Life	2000(25°C, 80%SOC)		
Terminal	JST/XT60/M8/M6/DC5521/...		
Optional	I2C		



Part Number	DNK-LFP64135	DNK-LFP64180	DNK-LFP64450
Specification	6.4V 13.5Ah	6.4V 18Ah	6.4V 45Ah
Energy	86.4Wh	115.2Wh	288Wh
Cell Brand	Chinese/DNK	Chinese/DNK	Chinese/DNK
Cell Connection	2S3P	2S3P	2S3P
Input	7.3V-6.75A	7.3V-9A	7.3V-22.5A
Output	6.4V-6.75A	6.4V-9A	6.4V-22.5A
Max. Charge Current	6.75A	9A	22.5A
Dimensions (mm)	70*47*110	70*47*110	/
Weight (appr.)	1kg	1.2g	1.8kg
Cycle Life	2000(25°C, 80%SOC)		
Terminal	JST/XT60/M8/M6/DC5521/...		
Optional	I2C		



Part Number	DNK-LFP64360	DNK-LFP64400	DNK-LFP64480
Specification	6.4V 36Ah	6.4V 40Ah	6.4V 48Ah
Energy	230.4Wh	256Wh	307.2Wh
Cell Brand	Chinese/DNK	Chinese/DNK	Chinese/DNK
Cell Connection	2S8P	2S8P	2S8P
Input	7.3V-18A	7.3V-20A	7.3V-24A
Output	6.4V-18A	6.4V-20A	6.4V-24A
Max. Charge Current	18A	20A	24A
Dimensions (mm)	181*77*168	181*77*168	/
Weight (appr.)	1.5kg	1.8kg	2.7kg
Cycle Life	2000(25°C, 80%SOC)		
Terminal	JST/XT60/M8/M6/DC5521/...		
Optional	I2C		

* Note: Data is for reference only, all products can be customized according to actual needs

Part Number	DNK-LFP12845	DNK-LFP12860	DNK-LFP128150
Specification	12.8V 4.5Ah	12.8V 6Ah	12.8V 15Ah
Energy	57.6Wh	76.8Wh	192Wh
Cell Brand	Chinese/DNK	Chinese/DNK	Chinese/DNK
Cell Connection	4S1P	4S1P	/
Input	14.6V-2.25A	14.6V-3A	14.6V-7.5A
Output	12.8V-2.25A	12.8V-3A	12.8V-7.5A
Max. Charge Current	2.25A	3A	7.5A
Dimensions (mm)	88*22*71	135*34*72	/
Weight (appr.)	288g	560g	1.08kg
Cycle Life	2000(25°C, 80%SOC)		
Terminal	JST/XT60/M8/M6/DC5521/...		
Optional	I2C		



Part Number	DNK-LFP128135	DNK-LFP128180	DNK-LFP128450
Specification	12.8V 13.5Ah	12.8V 18Ah	12.8V 45Ah
Energy	172.8Wh	230.4Wh	576Wh
Cell Brand	Chinese/DNK	Chinese/DNK	Chinese/DNK
Cell Connection	4S3P	4S3P	/
Input	14.6V-6.75A	14.6V-9A	14.6V-22.5A
Output	12.8V-10A	12.8V-10A	12.8V-20A
Max. Charge Current	6.75A	9A	22.5A
Dimensions (mm)	151*99*94	162*125*175	/
Weight (appr.)	2kg	2.2kg	4.8kg
Cycle Life	2000(25°C, 80%SOC)		
Terminal	JST/XT60/M8/M6/DC5521/...		
Optional	I2C		



Part Number	DNK-LFP128360	DNK-LFP128480	DNK-LFP1281200
Specification	12.8V 36Ah	12.8V 48Ah	12.8V 120Ah
Energy	460.8Wh	614.4Wh	1536Wh
Cell Brand	Chinese/DNK	Chinese/DNK	Chinese/DNK
Cell Connection	4S8P	4S8P	/
Input	14.6V-18A	14.6V-24A	14.6V-60A
Output	12.8V-18A	12.8V-24A	12.8V-60A
Max. Charge Current	18A	24A	60A
Dimensions (mm)	98*270*73	285*190*55	330*172*218
Weight (appr.)	2.8kg	5.3kg	10kg
Cycle Life	2000(25°C, 80%SOC)		
Terminal	JST/XT60/M8/M6/DC5521/...		
Optional	I2C		



* Note: Data is for reference only, all products can be customized according to actual needs



Part Number	DNK-LFP25690	DNK-LFP256120	DNK-LFP256300
Specification	25.6V 9Ah	25.6V 12Ah	25.6V 30Ah
Energy	230.4Wh	307.2Wh	768Wh
Cell Brand	Chinese/DNK	Chinese/DNK	Chinese/DNK
Cell Connection	8S2P	8S2P	/
Input	29.2V-4.5A	29.2V-6A	29.2V-15A
Output	25.6V-4.5A	25.6V-6A	25.6V-15A
Max. Charge Current	4.5A	6A	15A
Dimensions (mm)	71*44*176	71*65*255	/
Weight (appr.)	1.152kg	2.24kg	4.32kg
Cycle Life	2000(25°C, 80%SOC)		
Terminal	JST/XT60/M8/M6/DC5521/...		
Optional	I2C/SM Bus/ CAN Bus/ UART/ RS 485/Bluetooth/customized		



Part Number	DNK-LFP256270	DNK-LFP256360	DNK-LFP256900
Specification	25.6V 27Ah	25.6V 36Ah	25.6V 90Ah
Energy	691.2Wh	921.6Wh	2304Wh
Cell Brand	Chinese/DNK	Chinese/DNK	Chinese/DNK
Cell Connection	8S6P	8S6P	/
Input	29.2V-13.5A	29.2V-18A	29.2V-45A
Output	25.6V-13.5A	25.6V-18A	25.6V-45A
Max. Charge Current	13.5A	18A	45A
Dimensions (mm)	71*88*176	71*130*255	/
Weight (appr.)	3.456kg	6.72kg	12.96kg
Cycle Life	2000(25°C, 80%SOC)		
Terminal	JST/XT60/M8/M6/DC5521/...		
Optional	I2C/SM Bus/ CAN Bus/ UART/ RS 485/Bluetooth/customized		



Part Number	DNK-LFP256450	DNK-LFP256600	DNK-LFP2561500
Specification	25.6V 45Ah	25.6V 60Ah	25.6V 150Ah
Energy	1152Wh	1536Wh	3840Wh
Cell Brand	Chinese/DNK	Chinese/DNK	Chinese/DNK
Cell Connection	8S10P	8S10P	8S10P
Input	29.2V-22.5A	29.2V-30A	29.2V-75A
Output	25.6V-45A	25.6V-60A	25.6V-75A
Max. Charge Current	22.5A	30A	75A
Dimensions (mm)	279*175*189H	279*175*189H	485*175*250H
Weight (appr.)	8.5kg	12.5kg	25kg
Cycle Life	2000(25°C, 80%SOC)		
Terminal	JST/XT60/M8/M6/DC5521/...		
Optional	I2C/SM Bus/ CAN Bus/ UART/ RS 485/Bluetooth/customized		

* Note: Data is for reference only, all products can be customized according to actual needs

Part Number	DNK-LFP51290	DNK-LFP512120	DNK-LFP512300
Specification	51.2V 9Ah	51.2V 12Ah	3.2V 30Ah
Energy	460.8Wh	614.4Wh	1536Wh
Cell Brand	Chinese/DNK	Chinese/DNK	Chinese/DNK
Cell Connection	16S2P	16S2P	/
Input	58.4V-4.5A	58.4V-15A	58.4V-15A
Output	51.2V-4.5A	51.2V-15A	51.2V-15A
Max. Charge Current	4.5A	15A	15A
Dimensions (mm)	44*352*80	44*352*80	/
Weight (appr.)	2.304kg	4.48kg	5kg
Cycle Life	2000(25°C, 80%SOC)		
Terminal	JST/XT60/M8/M6/DC5521/...		
Optional	I2C/SM Bus/ CAN Bus/ UART/ RS 485/Bluetooth/customized		



Part Number	DNK-LFP512225	DNK-LFP32300	DNK-LFP32300
Specification	51.2V 22.5Ah	51.2V 30Ah	51.2V 75Ah
Energy	1152Wh	1536Wh	3840Wh
Cell Brand	Chinese/DNK	Chinese/DNK	Chinese/DNK
Cell Connection	16S5P	16S5P	/
Input	58.4V-11.25A	58.4V-15A	58.4V-30A
Output	51.2V-10A	51.2V-10A	51.2V-20A
Max. Charge Current	11.25A	15A	15A
Dimensions (mm)	140*352*90	140*352*90	/
Weight (appr.)	9kg	10kg	18kg
Cycle Life	2000(25°C, 80%SOC)		
Terminal	JST/XT60/M8/M6/DC5521/...		
Optional	I2C/SM Bus/ CAN Bus/ UART/ RS 485/Bluetooth/customized		



Part Number	DNK-LFP512450	DNK-LFP512600	DNK-LFP5121500
Specification	51.2V 45Ah	51.2V 60Ah	51.2V 150Ah
Energy	2304Wh	3072Wh	7680Wh
Cell Brand	Chinese/DNK	Chinese/DNK	Chinese/DNK
Cell Connection	16S10P	16S10P	/
Input	3.65V-22.5A	58.4V-15A	58.4V-15A
Output	51.2V-22.5A	51.2V-15A	51.2V-15A
Max. Charge Current	22.5A	15A	15A
Dimensions (mm)	235*377*90	235*377*90	/
Weight (appr.)	14kg	16kg	36kg
Cycle Life	2000(25°C, 80%SOC)		
Terminal	JST/XT60/M8/M6/DC5521/...		
Optional	I2C/SM Bus/ CAN Bus/ UART/ RS 485/Bluetooth/customized		



* Note: Data is for reference only, all products can be customized according to actual needs



Model	Voltage	Capacity	Energy	Max Charge Current	Max Discharge Current	Discharge Cut off Voltage	Permutation	Cell Type	Dimension	Weight (±3%)	Terminal
									L*W*H(±2MM)		
DNK-LFP1217	12.8V	20AH	256Wh	20A	20A	10V	4S5P	26700-4AH	181*77*H170	2.1Kg	M5
	12.8V	24AH	307.2Wh	24A	25A	10V	4S4P	32700-6AH	181*77*H170	2.9Kg	M5
	12.8V	25AH	320Wh	25A	25A	10V	4S2P	32140-12.5AH	181*77*H170	2.9Kg	M5
	12.8V	30AH	384Wh	30A	30A	10V	4S2P	32140-15AH	181*77*H170	3.1Kg	M5



Model	Voltage	Capacity	Energy	Max Charge Current	Max Discharge Current	Discharge Cut off Voltage	Permutation	Cell Type	Dimension	Weight (±3%)	Terminal
									L*W*H(±2MM)		
DNK-LFP1224	12.8V	24AH	307.2Wh	24A	25A	10V	4S4P	32700-6AH	165*125*H175	3.1Kg	M6
	12.8V	30AH	384Wh	30A	30A	10V	4S5P	32700-6AH	165*125*H175	3.7Kg	M6
	12.8V	36AH	460.8Wh	36A	40A	10V	4S6P	32700-6AH	165*125*H175	4.3Kg	M6
	12.8V	45AH	576Wh	45A	50A	10V	4S3P	32140-15AH	165*125*H175	4.5Kg	M6



Model	Voltage	Capacity	Energy	Max Charge Current	Max Discharge Current	Discharge Cut off Voltage	Permutation	Cell Type	Dimension	Weight (±3%)	Terminal
									L*W*H(±2MM)		
DNK-LFP12180	12.8V	200AH	2560Wh	200A	200A	10V	4S2P	Highstar-100AH	345*190*H245	20.8Kg	M8
	12.8V	230AH	2944Wh	230A	250A	10V	4S1P	EVE-230AH	345*190*H245	20Kg	M8
	12.8V	280AH	3584Wh	280A	300A	10V	4S1P	EVE-280AH	345*190*H245	25.6kg	M8
	12.8V	300AH	3840Wh	300A	300A	10V	4S1P	EVE-300AH	345*190*H245	25.2Kg	M8
	25.6V	90AH	2304Ah	90A	100A	20V	8S6P	32140-15AH	345*190*H245	17.6Kg	M8

Model	Voltage	Capacity	Energy	Max Charge Current	Max Discharge Current	Discharge Cut off Voltage	Permutation	Cell Type	Dimension	Weight (±3%)	Terminal
									L*W*H(±2MM)		
DNK-LFP1233A	12.8V	60AH	768Wh	60A	60A	10V	4S12P	26700-5AH	195*133*H171	6.1Kg	M6
	25.6V	24AH	614.4Wh	24A	25A	20V	8S6P	26700-4AH	195*133*H171	5.6Kg	M6
	25.6V	30AH	768Wh	30A	30A	20V	8S6P	26700-5AH	195*133*H171	6.1Kg	M6
	38.4V	20AH	768Wh	20A	20A	30V	12S4P	26700-5AH	195*133*H171	6.1Kg	M6
DNK-LFP1233B	12.8V	40AH	512Wh	40A	40A	10V	4S10P	26700-4AH	195*133*H171	4.9Kg	M6
	12.8V	45AH	576Wh	45A	50A	10V	4S10P	26700-4.5AH	195*133*H171	5.1Kg	M6
	12.8V	50AH	640Wh	50A	50A	10V	4S10P	26700-5AH	195*133*H171	5.3Kg	M6
	12.8V	54AH	691.2Wh	50A	50A	10V	4S12P	26700-4.5AH	195*133*H171	5.9Kg	M6
	12.8V	60AH	768Wh	60A	60A	10V	4S12P	26700-5AH	195*133*H171	6.1Kg	M6
	25.6V	24AH	614.4Wh	24A	30A	20V	8S6P	26700-4AH	195*133*H171	5.6Kg	M6
	25.6V	30AH	768Wh	30A	30A	20V	8S6P	26700-5AH	195*133*H171	6.1Kg	M6
	38.4V	20AH	768Wh	20A	20A	30V	12S4P	26700-5AH	195*133*H171	6.1Kg	M6
DNK-LFP1233C	12.8V	33AH	422.4Wh	30A	30A	10V	4S6P	32700-5.5AH	195*130*H154	4.5Kg	M6
	12.8V	36AH	460.8Wh	36A	40A	10V	4S6P	32700-6AH	195*130*H154	4.5Kg	M6
	12.8V	38AH	486.4Wh	38A	40A	10V	4S3P	32140-12.5AH	195*130*H154	4.5Kg	M6
	12.8V	45AH	576Wh	45A	50A	10V	4S3P	32140-15AH	195*130*H154	4.7Kg	M6
	25.6V	18AH	460.8Wh	18A	20A	20V	8S3P	32700-6AH	195*130*H154	4.7Kg	M6
	25.6V	20AH	512Wh	20A	20A	20V	8S3P	32700-6.5AH	195*130*H154	4.7Kg	M6
	38.4V	12AH	460.8Wh	12A	15A	30V	12S2P	32700-6AH	195*130*H154	4.7Kg	M6
	38.4V	15AH	576Wh	15A	15A	30V	12S1P	32140-15AH	195*130*H154	4.7Kg	M6
DNK-LFP1238C	12.8V	38AH	486.4Wh	38A	40A	10V	4S3P	32140-12.5AH	198*165*H175	4.8Kg	M6
	12.8V	45AH	576Wh	45A	50A	10V	4S3P	32140-15AH	198*165*H175	5Kg	M6
	12.8V	50AH	640Wh	50A	50A	10V	4S4P	32140-12.5AH	198*165*H175	5.9Kg	M6
	12.8V	60AH	768Wh	60A	60A	10V	4S4P	32140-15AH	198*165*H175	6.2Kg	M6
	12.8V	75AH	960Wh	80A	80A	10V	4S5P	32140-15AH	198*165*H175	7.4Kg	M6
	12.8V	50AH	640Wh	50A	50A	10V	4S1P	SVOLT-50AH	198*165*H175	6.2Kg	M6
	25.6V	25AH	640Wh	25A	25A	20V	8S2P	32140-12.5AH	198*165*H175	5.9Kg	M6
	25.6V	30AH	768WH	30A	30A	20V	8S2P	32140-15AH	198*165*H175	6.2Kg	M6
DNK-LFP1238D	12.8V	38AH	486.4Wh	38A	40A	10V	4S3P	32140-12.5AH	195*166*H170	4.7Kg	M6
	12.8V	45AH	576Wh	45A	50A	10V	4S3P	32140-15AH	195*166*H170	4.9Kg	M6
	12.8V	50AH	640Wh	50A	50A	10V	4S4P	32140-12.5AH	195*166*H170	5.8Kg	M6
	12.8V	60AH	768Wh	60A	60A	10V	4S4P	32140-15AH	195*166*H170	6.1Kg	M6
	12.8V	75AH	960Wh	80A	80A	10V	4S5P	32140-15AH	195*166*H170	7.3Kg	M6
	12.8V	50AH	640Wh	50A	50A	10V	4S1P	SVOLT-50AH	195*166*H170	6.1Kg	M6
	25.6V	25AH	640Wh	25A	25A	20V	8S2P	32140-12.5AH	195*166*H170	5.8Kg	M6
	25.6V	30AH	768WH	30A	30A	20V	8S2P	32140-15AH	195*166*H170	6.1Kg	M6
DNK-LFP1240	12.8V	38AH	486.4Wh	38A	40A	10V	4S3P	32140-12.5AH	223*120*H175	4.3Kg	M6
	12.8V	45AH	576Wh	45A	50A	10V	4S3P	32140-15AH	223*120*H175	4.5Kg	M6
	12.8V	50AH	640Wh	50A	50A	10V	4S4P	32140-12.5AH	223*120*H175	5.4Kg	M6
	12.8V	60AH	768Wh	60A	60A	10V	4S4P	32140-15AH	223*120*H175	5.7Kg	M6
	25.6V	25AH	640Wh	25A	25A	20V	8S2P	32140-12.5AH	223*120*H175	5.4Kg	M6
	25.6V	30AH	768Wh	30A	30A	20V	8S2P	32140-15AH	223*120*H175	5.7Kg	M6
	38.4V	12AH	460.8Wh	12A	15A	30V	12S1P	32140-12.5AH	223*120*H175	4.3Kg	M6
	38.4V	15AH	576Wh	15A	15A	30V	12S1P	32140-15AH	223*120*H175	4.5Kg	M6
DNK-LFP1255A	12.8V	50AH	640Wh	50A	50A	10V	4S4P	32140-12.5AH	229*138*H208	6.3Kg	M6
	12.8V	50AH	640Wh	50A	50A	10V	4S1P	SVOLT-50AH	229*138*H208	6.5Kg	M6
	12.8V	54AH	691.2WH	50A	50A	10V	4S9P	32700-6AH	229*138*H208	6.3Kg	M6
	12.8V	60AH	768Wh	60A	60A	10V	4S4P	32140-15AH	229*138*H208	7.1Kg	M6
DNK-LFP1255B	12.8V	70AH	896Wh	50A	50A	10V	4S14P	26700-5AH	229*138*H208	6Kg	M6
	25.6V	25AH	640Wh	25A	30A	20V	8S2P	32140-12.5AH	229*138*H208	6.3Kg	M6
	25.6V	30AH	768Wh	30A	30A	20V	8S2P	32140-15AH	229*138*H208	7.1Kg	M6
	25.6V	35AH	896Wh	35A	40A	20V	8S7P	26700-5AH	229*138*H208	6Kg	M6

Model	Voltage	Capacity	Energy	Max Charge Current	Max Discharge Current	Discharge Cut off Voltage	Permutation	Cell Type	Dimension L*W*H(±2MM)	Weight (±3%)	Terminal
DNK-LFP1260	25.6V	38AH	972.8Wh	38A	40A	20V	8S3P	32140-12.5Ah	257*132*H200	8.2Kg	M6
	25.6V	45AH	1152Wh	45A	50A	20V	8S3P	32140-15Ah	257*132*H200	8.7Kg	M6
	38.4V	25AH	960Wh	25A	30A	30V	12S2P	32140-12.5Ah	257*132*H200	8.2Kg	M6
	38.4V	30AH	1152Wh	30A	30A	30V	12S2P	32140-15Ah	257*132*H200	8.7Kg	M6
DNK-LFP1265	12.8V	100AH	1280Wh	100A	100A	10V	4S1P	EVE-100Ah	349*169*H179	9.5Kg	M8
	12.8V	100AH	1280Wh	100A	100A	10V	4S8P	32140-12.5Ah	349*169*H179	10.5Kg	M8
	12.8V	120AH	1536Wh	120A	120A	10V	4S8P	32140-15Ah	349*169*H179	11.5Kg	M8
	12.8V	125AH	1600Wh	120A	120A	10V	4S10P	32140-12.5Ah	349*169*H179	13Kg	M8
	12.8V	135AH	1728Wh	135A	150A	10V	4S9P	32140-15Ah	349*169*H179	12.6Kg	M8
	12.8V	150AH	1920Wh	150A	150A	10V	4S10P	32140-15Ah	349*169*H179	13.8Kg	M8
	25.6V	75AH	1920Wh	75A	80A	20V	8S5P	32140-15Ah	349*169*H179	13.8Kg	M8
	38.4V	45AH	1728Wh	45A	50A	30V	12S3P	32140-15Ah	349*169*H179	12.6Kg	M8
DNK-LFP1270A	12.8V	100AH	1280Wh	100A	100A	10V	4S1P	EVE-100AH	260*168*H209	9.9Kg	M8
	12.8V	120AH	1536Wh	120A	120A	10V	4S8P	32140-15AH	260*168*H209	11.5Kg	M8
	12.8V	125AH	1600Wh	120A	120A	10V	4S1P	Ganfeng-125AH	260*168*H209	12.3Kg	M8
	25.6V	50AH	1280Wh	50A	50A	20V	8S4P	32140-12.5AH	260*168*H209	10.8Kg	M8
DNK-LFP1270B	12.8V	100AH	1280Wh	100A	100A	10V	4S8P	32140-12.5AH	260*168*H209	10.8Kg	M8
	12.8V	120AH	1536Wh	120A	120A	10V	4S8P	32140-15AH	260*168*H209	11.5Kg	M8
	25.6V	50AH	1280Wh	50A	50A	20V	8S4P	32140-12.5AH	260*168*H209	10.8Kg	M8
	25.6V	60AH	1536Wh	60A	60A	20V	8S4P	32140-15AH	260*168*H209	11.5Kg	M8
DNK-LFP1290	12.8V	90AH	1152Wh	90A	100A	10V	4S6P	32140-15AH	307*169*H208	9.4Kg	M8
	12.8V	100AH	1280Wh	100A	100A	10V	4S1P	EVE-100AH	307*169*H208	10.2Kg	M8
	12.8V	100AH	1280Wh	100A	100A	10V	4S8P	32140-12.5AH	307*169*H208	11.2Kg	M8
	12.8V	120AH	1536Wh	120A	120A	10V	4S8P	32140-15AH	307*169*H208	11.8Kg	M8
	12.8V	125AH	1600Wh	120A	120A	10V	4S1P	Ganfeng-125AH	307*169*H208	13.1Kg	M8
	12.8V	150AH	1920Wh	150A	150A	10V	4S1P	REPT-150AH	307*169*H208	13.6Kg	M8
	25.6V	50AH	1280Wh	50A	50A	20V	8S4P	32140-12.5AH	307*169*H208	11Kg	M8
	25.6V	60AH	1536Wh	60A	60A	20V	8S4P	32140-15AH	307*169*H208	11.6Kg	M8
DNK-LFP12100	12.8V	100AH	1280Wh	100A	100A	10V	4S1P	EVE-100AH	330*172*H215	10.2Kg	M8
	12.8V	100AH	1280Wh	100A	100A	10V	4S8P	32140-12.5AH	330*172*H215	11.2Kg	M8
	12.8V	120AH	1536Wh	120A	120A	10V	4S8P	32140-15AH	330*172*H215	11.8Kg	M8
	12.8V	125AH	1600Wh	120A	120A	10V	4S1P	Ganfeng-125AH	330*172*H215	12.6Kg	M8
	12.8V	150AH	1920Wh	150A	150A	10V	4S1P	REPT-150AH	330*172*H215	13.8Kg	M8
	12.8V	180AH	2304Wh	180A	200A	10V	4S12P	32140-15AH	330*172*H215	16.6Kg	M8
	25.6V	90AH	2304Wh	90A	100A	20V	8S6P	32140-15AH	330*172*H215	16.6Kg	M8
	38.4V	60AH	2304Wh	60A	60A	30V	12S4P	32140-15AH	330*172*H215	16.6Kg	M8
DNK-LFP12120A	12.8V	120AH	1536Wh	120A	120A	10V	4S1P	HIGEE-120AH	406*173*H218	20.8Kg	M8
	12.8V	150AH	1920Wh	150A	150A	10V	4S10P	32140-15AH	406*173*H218	20.8Kg	M8
	12.8V	200AH	2560Wh	200A	200A	10V	4S2P	Ganfeng-100AH	406*173*H218	20.8Kg	M8
	25.6V	100AH	2560Wh	100A	100A	20V	8S1P	Ganfeng-100AH	406*173*H218	20.8Kg	M8
DNK-LFP12120B	12.8V	120AH	1536Wh	100A	100A	10V	4S1P	HIGEE-120AH	406*173*H236	13.8Kg	M8
	12.8V	150AH	1920Wh	150A	150A	10V	4S10P	32140-15AH	406*173*H236	14Kg	M8
	12.8V	200AH	2560Wh	200A	200A	10V	4S2P	Ganfeng-100AH	406*173*H236	20.8Kg	M8
	25.6V	100AH	2560Wh	100A	100A	20V	8S1P	Ganfeng-100AH	406*173*H236	20.8Kg	M8
DNK-LFP12150	12.8V	150AH	1920Wh	150A	150A	10V	4S1P	EVE-150AH	483*170*H240	14.9Kg	M8
	12.8V	150AH	1920Wh	150A	150A	10V	4S10P	32140-15AH	483*170*H240	14.9Kg	M8
	12.8V	200AH	2560Wh	200A	200A	10V	4S1P	Ganfeng-206AH	483*170*H240	20.6Kg	M8
	12.8V	200AH	2560Wh	200A	200A	10V	4S2P	SVOLT-106AH	483*170*H240	19.4Kg	M8
	12.8V	250AH	3200Wh	250A	250A	10V	4S2P	Ganfeng-125AH	483*170*H240	24.2Kg	M8
	25.6V	100AH	2560Wh	100A	100A	20V	8S1P	SVOLT-106AH	483*170*H240	19.4Kg	M8
	25.6V	135AH	3456Wh	135A	150A	20V	8S9P	32140-15AH	483*170*H240	25Kg	M8
	38.4V	90AH	3456Wh	90A	100A	30V	12S6P	32140-15AH	483*170*H240	25Kg	M8
DNK -LFP 12150 PLUS	12.8V	150AH	1920Wh	150A	150A	10V	4S1P	EVE-150AH	502*186*H243	14.9Kg	M8
	12.8V	150AH	1920Wh	150A	150A	10V	4S10P	32140-15AH	502*186*H243	14.9Kg	M8
	12.8V	200AH	2560Wh	200A	200A	10V	4S1P	Ganfeng-206AH	502*186*H243	20.6Kg	M8
	12.8V	200AH	2560Wh	200A	200A	10V	4S2P	SVOLT-106AH	502*186*H243	19.4Kg	M8

Model	Voltage	Capacity	Energy	Max Charge Current	Max Discharge Current	Cut off Voltage	Permutation	CellType	Dimension L*W*H(±2MM)	Weight	Terminal
DNK-LFP12180	12.8V	200AH	2560Wh	200A	200A	10V	4S2P	Highstar-100AH	345*190*H245	20.8Kg	M8
	12.8V	230AH	2944Wh	230A	250A	10V	4S1P	EVE-230AH	345*190*H245	20Kg	M8
	12.8V	280AH	3584Wh	280A	300A	10V	4S1P	EVE-280AH	345*190*H245	25.6kg	M8
	12.8V	300AH	3840Wh	300A	300A	10V	4S1P	EVE-300AH	345*190*H245	25.2Kg	M8
	25.6V	90AH	2304Ah	90A	100A	20V	8S6P	32140-15AH	345*190*H245	17.6Kg	M8
	25.6V	100AH	2560Wh	100A	100A	20V	8S1P	Highstar-100AH	345*190*H245	20.8Kg	M8
	38.4V	60AH	2304Ah	60A	60A	30V	12S4P	32140-15AH	345*190*H245	17.6Kg	M8
	51.2V	45AH	2304Wh	45A	50A	40V	16S3P	32140-15AH	345*190*H245	17.6Kg	M8
DNK-LFP12200	12.8V	200AH	2560Wh	200A	200A	10V	4S2P	EVE-100AH	522*240*H218	20.1Kg	M8
	12.8V	200AH	2560Wh	200A	200A	10V	4S1P	Ganfeng-206AH	522*240*H218	21.3Kg	M8
	12.8V	280AH	3200Wh	280A	300A	10V	4S1P	EVE-280AH	522*240*H218	26.5Kg	M8
	12.8V	300AH	3840Wh	300A	300A	10V	4S1P	EVE-304AH	522*240*H218	26.1Kg	M8
	25.6V	125AH	3200Wh	120A	120A	20V	8S1P	Ganfeng-125AH	522*240*H218	24.9Kg	M8
	25.6V	150AH	3840Wh	150A	150A	20V	8S1P	ANC-150AH	522*240*H218	28.1Kg	M8
	38.4V	90AH	3456Wh	90A	100A	20V	12S6P	32140-15AH	522*240*H218	25.7Kg	M8
	51.2V	50AH	2560Wh	50A	25A	40V	16S1P	ANC-50AH	522*240*H218	22.5Kg	M8
DNK-LFP12250	12.8V	250AH	3200Wh	250A	250A	10V	4S2P	Ganfeng-125AH	520*269*H220	25.3Kg	M8
	12.8V	280AH	3584Wh	280A	300A	10V	4S1P	EVE-280AH	520*269*H220	26.9Kg	M8
	12.8V	300AH	3840Wh	300A	300A	10V	4S1P	EVE-304AH	520*269*H220	26.5Kg	M8
	12.8V	400AH	5120Wh	300A	300A	10V	4S2P	Ganfeng-206AH	520*269*H220	38.9Kg	M8
	12.8V	450AH	5760Wh	300A	300A	10V	4S3P	REPT-150AH	520*269*H220	39.3Kg	M8
	25.6V	200AH	5120Wh	200A	200A	20V	8S1P	Ganfeng-206AH	520*269*H220	38.9Kg	M8
	38.4V	150AH	5760Wh	150A	150A	30V	12S1P	REPT-150AH	520*269*H220	39.3Kg	M8
	51.2V	100AH	5120Wh	100A	100A	40V	16S1P	GOTION-105AH	520*269*H220	38.1Kg	M8
DNK-LFP12300	12.8V	300AH	3840Wh	300A	300A	10V	4S1P	EVE-304AH	640*245*H220	25.8Kg	M8
	12.8V	400AH	5120Wh	300A	300A	10V	4S2P	Ganfeng-206AH	640*245*H220	38.2Kg	M8
	12.8V	450AH	5760Wh	300A	300A	10V	4S3P	EVE-150AH	640*245*H220	39.8Kg	M8
	12.8V	560AH	7168Wh	300A	300A	10V	4S2P	EVE-280AH	640*245*H220	48.6Kg	M8
	12.8V	600AH	7680Wh	300A	300A	10V	4S2P	EVE-304AH	640*245*H220	47.8Kg	M8
	25.6V	300AH	7680Wh	300A	300A	20V	8S1P	EVE-304AH	640*245*H220	47.8Kg	M8
	38.4V	150AH	5760Wh	150A	150A	30V	12S1P	EVE-150AH	640*245*H220	39.8Kg	M8
	51.2V	150AH	7680Wh	150A	150A	40V	16S1P	EVE-150AH	640*245*H220	51.8Kg	M8
DNK-LFP70D23	12.8V	100AH	1280Wh	100A	100A	10V	4S1P	SVOLT-106AH	230*174*H200	10.2Kg	Copper column
	12.8V	120AH	1536Wh	120A	120A	10V	4S8P	32140-15AH	230*174*H200	12Kg	Copper column
	25.6V	50AH	1280Wh	50A	50A	10V	8S4P	32140-12.5AH	230*174*H200	11.36Kg	Copper column
	25.6V	60AH	1536Wh	60A	60A	10V	8S4P	32140-15AH	230*174*H200	12Kg	Copper column
DNK-LFP70D	12.8V	100AH	1280Wh	100A	100A	10V	4S1P	EVE-100AH	306*174*H200	10.65Kg	Copper column
	12.8V	150AH	1920Wh	150A	150A	10V	4S10P	32140-15AH	306*174*H200	14.65Kg	Copper column
	25.6V	50AH	1280Wh	50A	50A	20V	8S1P	ANC-50AH	306*174*H200	11.85Kg	Copper column
	25.6V	75AH	1280Wh	80A	80A	20V	8S5P	32140-15AH	306*174*H200	14.65Kg	Copper column
DNK-LFP57217	12.8V	100AH	1280Wh	100A	100A	10V	4S1P	SVOLT-106AH	279*175*H189	10.3Kg	Copper column
	12.8V	120AH	1536Wh	120A	120A	10V	4S8P	32140-15AH	279*175*H189	12.1Kg	Copper column
	25.6V	50AH	1280Wh	50A	50A	10V	8S4P	32140-12.5AH	279*175*H189	11.5Kg	Copper column
	25.6V	60AH	1536Wh	60A	60A	10V	8S4P	32140-15AH	279*175*H189	12.1Kg	Copper column
DNK-LFP58043	12.8V	100AH	1280Wh	100A	100A	10V	4S1P	SVOLT-106AH	318*176*H187	10.45Kg	Copper column
	12.8V	120AH	1536Wh	120A	120A	10V	4S8P	32140-15AH	318*176*H187	12.25Kg	Copper column
	25.6V	50AH	1280Wh	50A	50A	10V	8S4P	32140-12.5AH	318*176*H187	11.65Kg	Copper column
	25.6V	60AH	1536Wh	60A	60A	10V	8S4P	32140-15AH	318*176*H187	12.25Kg	Copper column
DNK-LFP60038	12.8V	100AH	1280Wh	100A	100A	10V	4S1P	SVOLT-106AH	355*175*H188	10.65Kg	Copper column
	12.8V	135AH	1728Wh	150A	150A	10V	4S1P	REPT-135AH	355*175*H188	13.25Kg	Copper column
	12.8V	135AH	1728Wh	135A	150A	10V	4S9P	32140-15AH	355*175*H188	13.65Kg	Copper column
	25.6V	50AH	1280Wh	50A	50A	20V	8S1P	SVOLT-50AH	355*175*H188	12.45Kg	Copper column
DNK-LFPCTO	12.8V	50-600AH	0.64-7.68KWh	100-300A	100-300A	10V	4S-1P/2P	EVE/SVOLT/ANC	/	/	M8
	25.6V	50-300AH	2.56-7.68KWh	100-300A	100-300A	20V	8S-1P/2P	EVE/SVOLT/ANC	/	/	M8
	38.4V	50-300AH	1.92-11.52KWh	100-200A	100-200A	30V	12S-1P/2P	EVE/SVOLT/ANC	/	/	M8
	51.2V	50-300AH	2.56-15.36KWh	100-200A	100-200A	40V	16S-1P/2P	EVE/SVOLT/ANC	/	/	M8

* Note: Data is for reference only



Lithium Polymer batteries are rechargeable batteries known for their high energy density, lightweight design, and fast recharge capabilities. They provide high discharge rates, low self-discharge, and flexible packaging options that make them suitable for a wide range of electronic devices.

Features

1. High Energy Density: Up to 200Wh/kg.
2. Flexible in battery dimension
3. Pouch design, no explosion, low safety problem
4. Low Self-Discharge Rate: Less than 1.5% per month.
5. Flexible Shape and Size: Various configurations available.
6. Light weight

Our Advantages:

1. Wide temperature usage range: -40-85
2. Custom dimensions with low MOQ starting 300 pcs.
3. Available size: thickness up to 0.6mm, width 120mm, length 300mm
4. Long Cycle Life: 300-500 charge/discharge cycles.
5. Available size: thickness up to 0.6mm, width 120mm, length 300mm
6. High Discharge Rate: Up to 100C.
7. Wide Range of Capacities: From 10mAh to 15,000mAh.
8. Fast Recharge Capability: Recharge rate up to 2C.
9. NMC/LiFePO4 battery cell available

Choose our LiPo battery for exceptional performance, reliability, and safety in all your power needs!

Model	DNK388085
Battery Dimension(T*W*L)	38*80*85mm
Nominal Voltage	3.8V
Nominal Capacity	3800mAh
Connector	2.54-2P
Wire	UL3302 24AWG
Board Dimension	75*5mm



Model	DNK602530
Dimension(T*W*L)	60*25*320mm
Nominal Voltage	3.7V
Nominal Capacity	900mAh
Connector	PH2.0
Wire	UL3302 26AWG
Board Dimension	18*3.7*0.6mm



Model	DNK6062110
Dimension(T*W*L)	60*62*110mm
Nominal Voltage	3.7V
Nominal Capacity	5000mAh
Connector	PH2.0
Wire	24AWG
Board Dimension	30*4*0.6mm



Model	DNK-LP1000
Dimension(T*W*L)	18*18*65mm
Nominal Voltage	3.7V
Nominal Capacity	1000mAh
Power	3.7V
Max. Discharge Current	3A
Weight	23.5±1g



*Note: Data is for reference only



Model	DNKR443535
Dimensions	3.5*44mm
Nominal Voltage	3.7V
Nominal Capacity	450mAh
Charge Voltage	4.2V
Discharge Voltage	2.75V
Connector	AWG26



Model	DNKR653929
Dimension(T*W*L)	6.5*39mm
Nominal Voltage	3.7V
Nominal Capacity	180mAh
Charge Voltage	4.2V
Discharge Voltage	2.75V
Charge Current	AWG26

Part Number	Capacity (mAh)	Voltage	C Rate	Thickness (mm)	Diameter (mm)
DNKR243535	210	3.7V	1C	2.4	35
DNKR253027	135	3.7V	1C	2.5	30
DNKR253736	210	3.7V	15C	2.5	37
DNKR286254	1080	3.7V	1C	2.8	62
DNKR302823	140	3.7V	1C	3	28
DNKR303027	140	3.7V	15C	3	30
DNKR313125	240	3.7V	1C	3.1	31
DNKR323535	305	3.7V	3C	3.2	35
DNKR331615	62	3.7V	1C	3.3	16
DNKR333736A	385	3.8V	1C	3.3	37
DNKR333736B	355	3.7V	3C	3.3	37
DNKR353027	210	3.7V	1C	3.5	30
DNKR353331	295	3.8V	1C	3.5	33
DNKR363027A	225	3.8V	1C	3.6	30

Model	DNK015253
Dimension(T*W*L)	1*52*53mm
Nominal Voltage	3.7V
Nominal Capacity	180mAh
Charge Voltage	4.2V
Discharge Voltage	2.75V
Charge Current	normal 90mA, max.180mA



Model	DNKCV140825
Dimension(T*W*L)	1.4*8*25mm
Nominal Voltage	3.8V
Nominal Capacity	15mAh
Charge Voltage	4.2V
Discharge Voltage	2.75V
Charge Current	normal 7mA, max.15mA



Model	DNKCV201833
Dimension(T*W*L)	2*18*33mm
Nominal Voltage	3.7V
Nominal Capacity	40mAh
Charge Voltage	4.2V
Discharge Voltage	2.75V
Charge Current	normal 20mA, max.40mA



Model	Capacity (mAh)	Voltage(V)	External radius (mm)	Inner radius(mm)	Thickness (mm)
DNKCV311331	90	3.7	84.9	81.8	3.1
DNKCV381447	235	3.8	34.6	30.8	3.8
DNKCV250830	40	3.7	54.8	52	2.5
DNKCV280848	80	3.7	19.4	16.6	2.8
DNKCV400942	125	3.7	78	74	4
DNKCV382438	400	3.7	28.8	25	3.8



Model	DNK013040
Dimension(T*W*L)	1*30*40mm
Nominal Voltage	3.7V
Nominal Capacity	70mAh
Charge Voltage	4.2V
Discharge Voltage	2.75V
Charge Current	normal 35mA, max.70mA



Model	DNK015253
Dimension(T*W*L)	1*52*53mm
Nominal Voltage	3.7V
Nominal Capacity	180mAh
Charge Voltage	4.2V
Discharge Voltage	2.75V
Charge Current	normal 90mA, max.180mA



Model	DNK171320
Dimension(T*W*L)	1.7*31*20mm
Nominal Voltage	3.7V
Nominal Capacity	25mAh
Charge Voltage	4.2V
Discharge Voltage	2.75V
Charge Current	normal 12mA, max.25mA



Model	DNK286380
Dimension(T*W*L)	2.8*63*81mm
Nominal Voltage	3.7V
Nominal Capacity	2000mAh
Charge Voltage	4.2V
Discharge Voltage	2.75V
Connector	Molex 51021

Model	Capacity(mAh)	Dimensions			C-Rate
		T(± 0.2 mm)	W(± 1.0 mm)	L(± 0.5 mm)	
103333	35	1	33	33	0.2C-1.0C
104241	52	1	42	41	0.2C-1.0C
54040	22	0.5	40	40	0.2C-1.0C
104650	140	1	46	50	0.2C-1.0C
104040	60	1	40	40	0.2C-1.0C
105070	240	1	50	70	0.2C-1.0C
116098	450	1	60	98	0.2C-1.0C
116082	300	1.1	60	82	0.2C-1.0C
63535	35	0.6	35	35	0.2C-1.0C
54855	42	0.5	48	55	0.2C-1.0C
52540	14	0.5	25	40	0.2C-1.0C
105256	145	1	52	56	0.2C-1.0C
53559	32	0.5	35	59	0.2C-1.0C
53030	11	0.5	30	30	0.2C-1.0C
136258	310	1.3	62	58	0.2C-1.0C
152020	18	1.5	20	20	0.2C-1.0C
152830	60	1.5	28	30	0.2C-1.0C
152835	100	1.5	28	35	0.2C-1.0C
153030	80	1.5	30	30	0.2C-1.0C
153050	150	1.5	30	50	0.2C-1.0C
153535	120	1.5	35.5	35	0.2C-1.0C
154543	230	1.5	45	43	0.2C-1.0C
155776	500	1.5	57	76	0.2C-1.0C
161652	90	1.6	16	52	0.2C-1.0C
171538	53	1.7	15	38	0.2C-1.0C
183030	105	1.8	30	30	0.2C-1.0C
200830	30	2	8	30	0.2C-1.0c
201021	25	2.2	10	21	0.2C-1.0C
201040	50	2	10	40	0.2C-1.0C
201235	55	2	12	35	0.2C-1.0C
201248	70	2	12	48	0.2C-1.0C
201515	20	2	15	15	0.2C-1.0C



Model	DNK350835
Dimension(T*W*L)	3.5*8*36mm
Nominal Voltage	3.7V
Nominal Capacity	75mAh
Charge Voltage	4.2V
Discharge Voltage	2.75V
Charge Current	normal 37mA, max. 75mA



Model	DNK352065
Dimension(T*W*L)	3.5*20*66mm
Nominal Voltage	3.7V
Nominal Capacity	420mAh
Charge Voltage	4.2V
Discharge Voltage	2.75V
Charge Current	normal 210mA, max. 420mA



Model	DNK561536
Dimension(T*W*L)	5.6*15*36mm
Nominal Voltage	3.7V
Nominal Capacity	560mAh
Charge Voltage	4.2V
Discharge Voltage	2.75V
Charge Current	normal 280mA, max.560mA



Model	DNK113488
Dimension(T*W*L)	11*34*89mm
Nominal Voltage	3.7V
Nominal Capacity	4200mAh
Charge Voltage	4.2V
Discharge Voltage	2.75V
Charge Current	normal 840mA, max.4200mA

* Note: Data is for reference only

Model	Capacity	Dimensions			Wire Length(mm)
		T(± 0.2 mm)	W(± 1.0 mm)	L(± 0.5 mm)	
101640	600	10	16	40	42
102050	1000	10	20	50	52
102052	1000	10	20	52	54
102060	1000	10	20	60	62
102460	1600	10	24	60	62
102580	2500	10	25	80	82
112050	1000	11	20	50	52
293996	1715	2.9	39	96	98
302682	760	3	26	82	84
302874	600	3	28	75	77
322496	800	3.2	24	96	98
322898	1000	3.2	28	98	100
323089	1160	3.2	30	89	91
323996	1810	3.2	39	96	98
333797	1700	3.3	37	97	99
351580	520	3.5	15	80	82
353085	1050	3.5	30	85	87
353283	930	3.5	32	82	84
354098	1800	3.5	40	98	100
363291	1500	3.6	32	91	93
363491	1600	3.6	34	91	93
383396	1510	3.8	33	96	98
402490	800	4	24	90	92
413078	1000	4.1	30	79	81
433078	1050	4.4	30	79	81
451860	500	4.5	18	60	62
461846	500	4.6	18	46	48
483381	1800	4.8	33	81	83
501880	900	5	18	80	82
501884	850	5	18	84	86
501884	850	5	18	84	86
502055	550	5	20	55	57



Model	DNK301013
Dimension(T*W*L)	3*10*14mm
Nominal Voltage	3.7V
Nominal Capacity	23mAh
Charge Voltage	4.2V
Discharge Voltage	2.75V
Charge Current	normal 12mA, max. 23mA



Model	DNK202018
Dimension(T*W*L)	2*20*19mm
Nominal Voltage	3.7V
Nominal Capacity	42mAh
Charge Voltage	4.2V
Discharge Voltage	2.75V
Charge Current	normal 21mA, max. 42mA



Model	DNK501323
Dimension(T*W*L)	5*13*24mm
Nominal Voltage	3.7V
Nominal Capacity	90mAh
Charge Voltage	4.2V
Discharge Voltage	2.75V
Charge Current	normal 45mA, max. 90mA



Model	DNK321324
Dimension(T*W*L)	3.2*13*25mm
Nominal Voltage	3.7V
Nominal Capacity	85mAh
Charge Voltage	4.2V
Discharge Voltage	2.75V
Charge Current	normal 42mA, max. 85mA

Model	Capacity	Dimensions			C-Rate
		T(± 0.2 mm)	W(± 1.0 mm)	L(± 0.5 mm)	
81831	8 mAh	0.8	18	31	0.2C-1.0C
201115	10 mAh	2	11	15	0.2C-1.0C
151020	12 mAh	1.5	10	20	0.2C-1.0C
151025	12 mAh	1.5	10	25	0.2C-1.0C
101414	15 mAh	1	14	14	0.2C-1.0C
250816	15 mAh	2.5	08	16	0.2C-1.0C
251015	15 mAh	2.5	10	15	0.2C-1.0C
251212	15 mAh	2.5	12	12	0.2C-1.0C
350812	15 mAh	3.5	08	12	0.2C-1.0C
201015	20 mAh	2	10	15	0.2C-1.0C
271414	20 mAh	2.7	14	14	0.2C-1.0C
400912	20 mAh	4	09	12	0.2C-1.0C
500522	20 mAh	5	05	22	0.2C-1.0C
42255	21 mAh	4.2	25	5	0.2C-1.0C
271015	22 mAh	2.7	10	15	0.2C-1.0C
311013	23 mAh	3.1	10	13	0.2C-1.0C
72736	25 mAh	7.2	73	6	0.2C-1.0C
191320	25 mAh	1.9	13	20	0.2C-1.0C
221220	25 mAh	2.2	12	20	0.2C-1.0C
301016	25 mAh	3	10	16	0.2C-1.0C
341114	25 mAh	3.4	11	14	0.2C-1.0C
420815	25 mAh	4.2	08	15	0.2C-1.0C
521011	30 mAh	5.2	10	11	0.2C-1.0C
551011	30 mAh	5.5	10	11	0.2C-1.0C
161823	33 mAh	1.6	18	23	0.2C-1.0C
451113	33 mAh	4.5	11	13	0.2C-1.0C
501112	34 mAh	5	11	12	0.2C-1.0C
142817	35 mAh	1.4	28	17	0.2C-1.0C
191622	35 mAh	1.9	16	22	0.2C-1.0C
351213	35 mAh	3.5	12	13	0.2C-1.0C
381213	35 mAh	3.8	12	13	0.2C-1.0C
390819	35 mAh	3.9	08	19	0.2C-1.0C

