

DNK LITHIUM-ION BATTERY CELL SPECIFICATIONS

DNK Power o., Ltd.

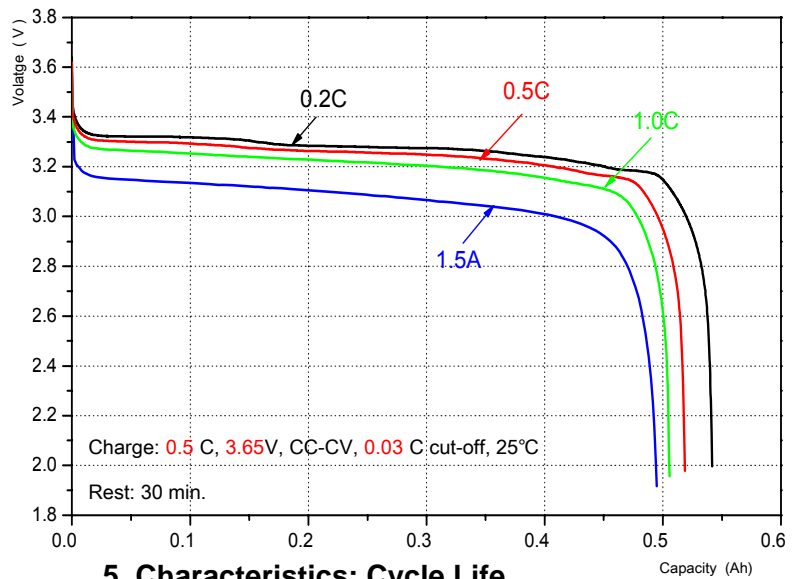
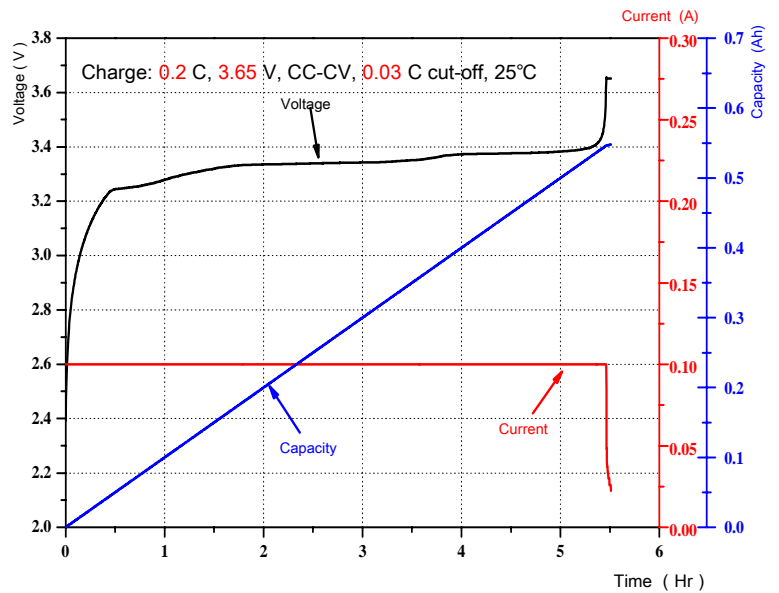
Tel: +86 755 36827358 Fax: +86 755 61605250

Mob: +86 189 4877 2006

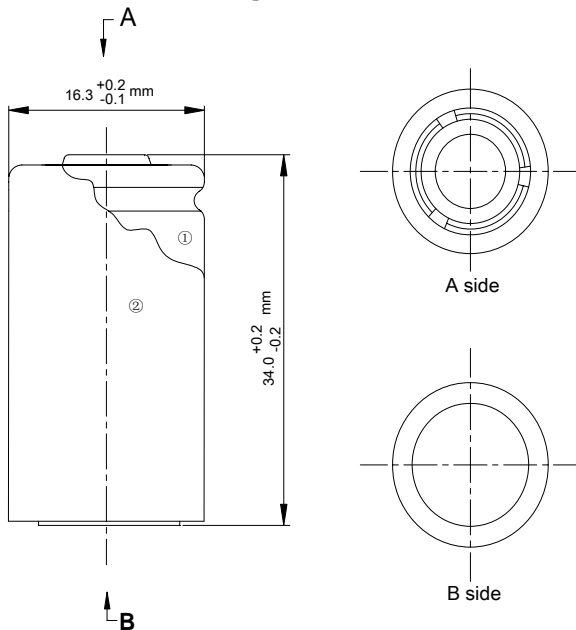
Battery Cell Model: 16340

1. Specifications

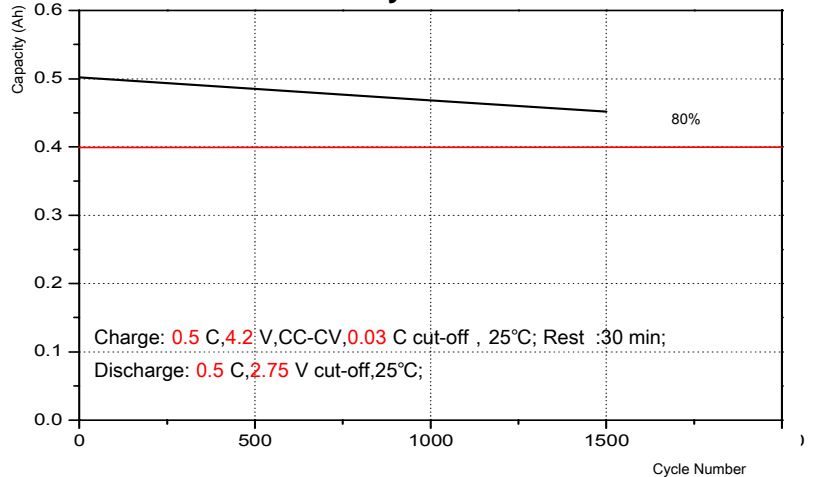
| | | |
|------|---------------------------|----------------------------|
| 1.1 | Nominal Capacity | 500 mAh |
| 1.2 | Minimum Capacity | 470 mAh |
| 1.3 | Nominal Voltage | 3.2 V |
| 1.4 | Internal Impedance | $\leq 100 \text{ m}\Omega$ |
| 1.5 | Energy | $\leq 1.6 \text{ Wh}$ |
| 1.6 | Standard Charging | 100 mA |
| 1.7 | Quick Charging | 500 mA (1 C) |
| 1.8 | Charging Voltage | 3.65 V |
| 1.9 | Continuous Discharging | 1.0 A |
| 1.10 | Discharge Cut-off Voltage | 2.0 V |
| 1.11 | Battery Cell Weight | $\leq 17 \text{ g}$ |



2. Product Drawing



5. Characteristics: Cycle Life



Charging

1 Charging current

Charging current shall be less than maximum charge current specified in the product specification.

2 Charging voltage

Charging shall be done by voltage less than that specified in the product specification.

3 Charging time

Continuous charging under specified voltage does not cause any loss of performance characteristics. However, the charge timer is recommended to be installed from a safety consideration, which shuts off further charging at time specified in the product specification.

4 Charging temperature

The cell shall be charged within a range of specified temperatures in the specification.

5 Reverse charging

The cell shall be connected, confirming that its poles are correctly aligned. Inverse charging shall be strictly prohibited. If the cell is connected improperly, it may be damaged.

Discharging

1 Discharging

The cell shall be discharged continuously at less than maximum discharge current specified in the product specification. In case of the higher discharge current should be set, it shall be discussed together with SDI.

2 Discharging temperature

The cell shall be discharged within a range of temperatures specified in the product specification. Otherwise, it may cause loss of performance characteristics.

3 Over-discharging

The system should equip with a device to prevent further discharging exceeding discharging cut-off voltage specified in the product specification. Over-discharging may cause loss of performance characteristics of battery. Over-discharging may occur by self-discharge if the battery is left for a very long time without any use. The charger should equip with a device to detect voltage of cell block and to determine recharging procedures.

Cautions

- (1) Do not immerse the battery in water, and keep the battery in a cool dry surrounding if it stands by.
- (2) Do not use or leave the battery at high temperature as fire or heater. Otherwise, it can overheat or fire or its performance will be degenerate and its service life will be decreased.
- (3) Do not reverse the position and negative terminals.
- (4) Do not connect the battery electrodes to an electrical outlet.
- (5) Do not short circuit. Otherwise it will cause serious damage of the battery.
- (6) Do not transport or store the battery together with metal objects such as hairpins, necklaces, etc.
- (7) Do not use the battery in a location where static electricity and magnetic field is great, otherwise, the safety devices may be damaged, causing hidden trouble of safety. Turn off the switch on its base.
- (8) Please use special lithium charger.
- (9) Do not disassemble battery.